

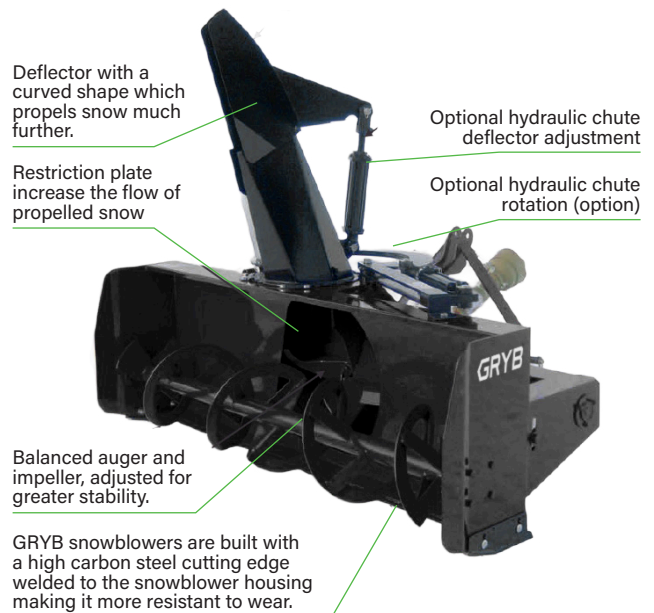
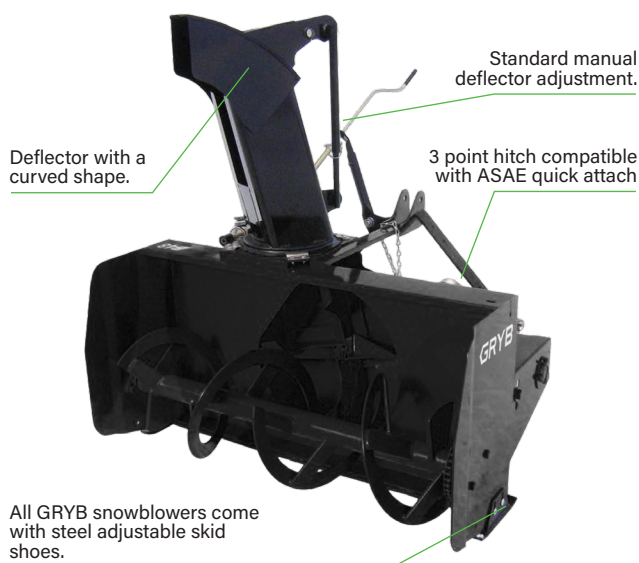
SNOWBLOWER

3-PT STANDARD DUTY

For small or large areas, you won't be disappointed by the performance of GRYB snowblowers. We offer a range of snowblower models width from 48 inches to 94 inches that can fit 15 to 75 horsepower compact tractors.

Reliable and lightweight, our snowblowers allows great maneuverability and are designed for small and agricultural tractors. Moreover, the chute and the housing of our snowblowers are made of top quality steel.

BUILT WITH THE BEST COMPONENTS ON THE MARKET



MODELS SBG1048 | SBG1054 | SBG1064 | SBG1074

MODELS B84C-L | SBG1084 | SBG1094



Adjustable skid shoes on all models



Standard PTO protection



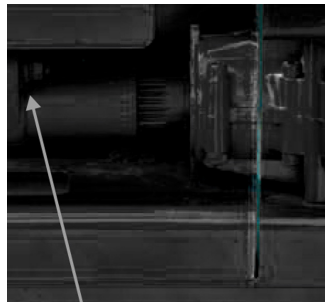
Parking stand, useful for storage, standard on all GRYB snowblowers.

SNOWBLOWER

3-PT STANDARD DUTY



GRYB snowblowers have an easily accessible manual chain idler on the side of the snowblower housing for quick adjustment.



Shear bolt protection on the drive shaft to prevent costly repairs.



Hydraulic chute rotation with motor and safety valve, ensure a smooth rotation. (option)



Manual chute rotation system, easy and affordable. (option)

SBG1048 SBG1054 SBG1064 SBG1074 B84C-L SBG1084 SBG1094

	HP AT PTO	15 to 30	20 to 40	20 to 40	30 to 50	30 to 50	45 to 90	50 to 90
Recommended Horsepower	HP AT PTO	15 to 30	20 to 40	20 to 40	30 to 50	30 to 50	45 to 90	50 to 90
Cutting Width	IN (CM)	48 (122)	54 (137)	64 (162)	74 (188)	84 (213)	84 (213)	94 (239)
Cutting Height	IN (CM)	24.75 (63)	26 (66)	26 (66)	26 (66)	27.5 (70)	34 (86)	34 (86)
Fan Diameter	IN (CM)	20 (51)	24 (61)	24 (61)	24 (61)	24 (61)	28 (71)	28 (71)
Fan Width	IN (CM)	6 (15)	7 (17)	7 (17)	9 (23)	9 (23)	10.5 (27)	10.5 (27)
Shaft Diameter	IN (CM)	1 (2.5)	1.375 (3.5)	1.375 (3.5)	1.375 (3.5)	1.375 (3.5)	1.5625 (4)	1.5625 (4)
Number of Blades		4	4	4	4	4	4	4
Auger Diameter	IN (CM)	15 (38)	15 (38)	15 (38)	15 (38)	15 (38)	20 (51)	20 (51)
Auger Drive Chain		50	60	60	60	60	60H	60H
Manual Chain Idle		Standard	Standard	Standard	Standard	Standard	Standard	Standard
Manual Deflector Adjustment		Standard	Standard	Standard	Standard	Standard	Standard	Standard
Non-Replaceable High Carbon Steel Cutting Edge		Yes	Yes	Yes	Yes	Yes	Yes	Yes
Replaceable and Adjustable to 3 Positions High Carbon Steel Skid Shoes		Yes	Yes	Yes	Yes	Yes	Yes	Yes
3 Point Hitch Category		1	1	1	1 & 2	1 & 2	1 & 2	2
3 Point ASAE Quick Hitch Compatible		1	1	1	1	1	1 & 2	2
Driveline Standard		20	40	40	40	50	50	60
Parking Stand		Standard	Standard	Standard	Standard	Standard	Standard	Standard
Approx. Shipping Weight	LBS (KG)	422 (191)	514 (233)	533 (242)	666 (302)	715 (324)	1,132 (513)	1,173 (532)
Approx. Operational Weight with Hydr. Rotation and Deflection	LBS (KG)	420 (190)	512 (232)	531 (241)	664 (301)	665 (301)	1,190 (540)	1,231 (558)