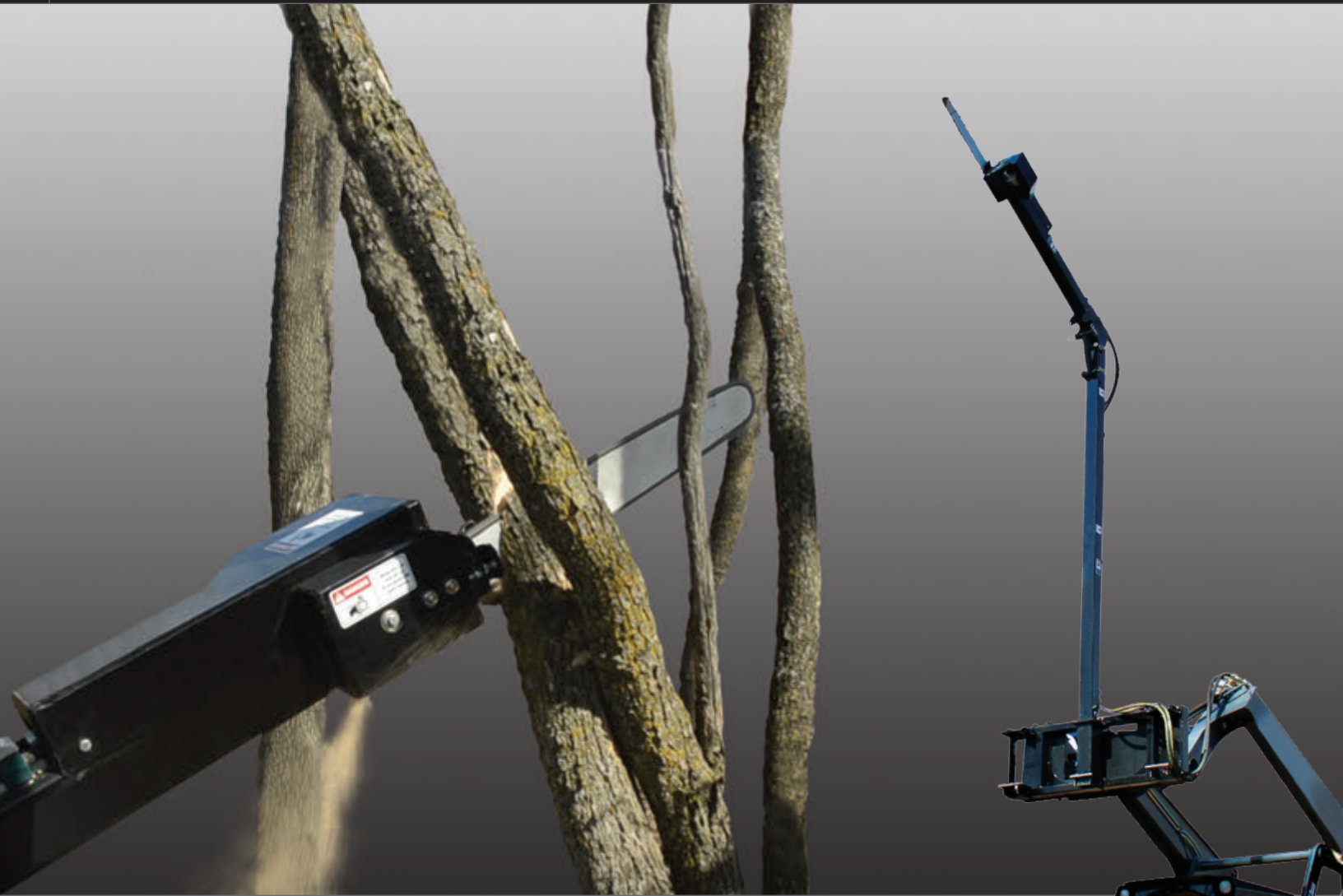
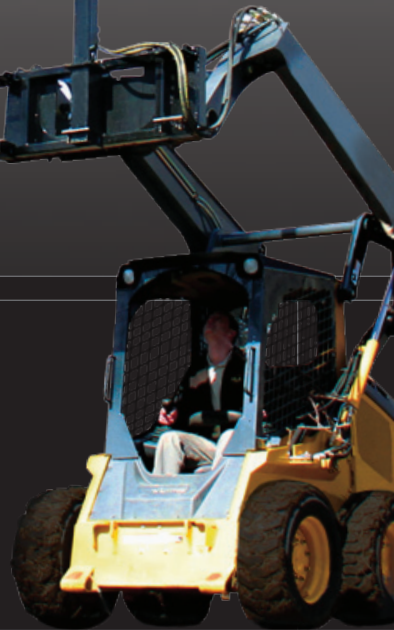


LIMB SAW

Boom Pole Mounted Hydraulic Chain Saw



**A Cut,
ABOVE AND BEYOND.**



Overhanging limbs can take over trails and fence lines. Now you can recover lost ground by limbing and trimming from the seat of your tractor or skidsteer.

The HLA Limb Saw is a hydraulically powered chain saw, mounted on a 12 foot boom pole. Combined with your loader height you now have the ability to reach over 20 feet. The Limb Saw's boom also allows you to reach over ditches and other obstacles and get to those hard to reach branches.

Gain access to valuable land and potentially increase yield from your fields. Tame unruly fence rows, allowing large equipment to get into all areas of your fields and prevent equipment damage from overhanging branches.

Eliminating ladders and climbing, you and your HLA Limb Saw will make short work of tall jobs.



Cutting

Using standard bars and chains makes it easy to find replacements, allowing you to trim those hard to reach places.

Driven

The Hydraulically driven saw powers through branches, cleaning up trails to prevent vehicle damage.

Reach

The 12 foot boom gives you the ability to reach over 20 feet. Allowing you to reach up or over ditches and obstacles.



- Limb from your seat - No ladders or climbing
- Automatic chain oiler - Less down time
- Hydraulic drive - Reliable cutting power
- Uses Standard bars and chains -Easy maintenance
- 12 ft. Boom - Equals over 20 ft. reach
- Approx. weight: 380 lbs.