

**PTO & HYDRAULIC  
SNOWBLOWERS**



# LIVING COUNTRY

**EQUIPMENT FOR RURAL PROPERTY CARE**





## Single Auger PTO Snowblowers

Single auger snow blowers from MK Martin easily cut through winter's icy grasp. High tensile steel flighting feeds snow into the 5 blade fan. It's tight tolerance to the housing sucks in the snow, blowing it out of the chute with as little as 12 HP.

### Features

- 7 year limited warranty
- High tensile steel flighting
- 3PH quick attach compatible
- 5 blade fan/impeller
- SB48, SB54, and SB60 comes standard with manual rotators
- Manual chute deflector



Models	SB48	SB54	SB60	SB68	SB72	SB78	SB87	SB97
<b>HP (Rec.)</b>	12 HP	15 HP	20 HP	30 HP	35 HP	50 HP	60 HP	75 HP
<b>Cutting Width</b>	48"	54"	60"	68"	72"	78"	87"	97"
<b>Cutting Edge</b>	1/4" x 1-1/2"	3/8" x 1"	3/8" x 1"	3/8" x 1"	3/8" x 1"	1/2" x 1-1/2"	1/2" x 2"	1/2" x 2"
<b>Auger Diam.</b>	12"	14"	14"	14"	14"	15"	19"	19"
<b>Fan Diam.</b>	19"	21"	21"	21"	21"	23"	27"	27"
<b>Chute Diam.</b>	7"	8"	8"	10"	10"	10"	12"	12"
<b>Chute Rotation</b>	Manual Included			Select Option				
<b>Chute Deflector</b>	Manual	Manual Standard / Hydraulic Option						
<b>Main Body Height</b>	22.5"	25"	25"	29"	29"	29"	36"	36"
<b>3PH Mount</b>	CAT. 1	CAT. 1	CAT. 1	CAT. 1	CAT. 1	CAT. 1 & 2	CAT. 2	CAT. 2
<b>Weight (LBS.)</b>	266	366	396	506	540	748	1034	1106

For convenience, snowblowers with a main body height of 25" or less come with a standard manual chute rotator. All rotators are optional on larger blowers where operators may not be able to safely reach a manual rotator as standard equipment.



## Double Auger PTO Snowblowers

Dual auger snow blowers from MK Martin work well in both acreage and commercial applications. Boasting up to a 120" cutting path, these snow blowers accommodate an additional auger to help chew down the most stubborn of snow banks. Larger blowers, means larger tractors. To accommodate the PTO needs of larger tractors, dual auger blowers are compatible with the optional 1000 RPM PTO kit, providing the perfect connection.

### Features

- 5 blade impeller
- 7 year limited warranty
- High tensile steel flighting on top and bottom augers
- CAT 2 3PH on model SB87D
- CAT 2 & CAT 3 3PH on SB97D-SB120D
- Hydraulic chute rotator standard on SB97D – SB120D
- Manual chute deflector on all models
- Skid shoes



Models	SB87D	SB97D	SB108D
<b>HP (Rec.)</b>	60 HP	100 HP	125 HP
<b>Cutting Width</b>	87"	97"	108"
<b>Cutting Edge</b>	1/2" x 2"	1/2" X 6" *	1/2" x 6" *
<b>Auger Diam.</b>	15" (x2)	15" (x1) 19" (x1)	15" (x1) 19" (x1)
<b>Fan Diam.</b>	27"	32"	32"
<b>Chute Diam.</b>	12"	13"	13"
<b>Chute Rotation (Man/Hyd)</b>	Opt/Opt	NA/Std	NA/Std
<b>Chute Deflector (Man/Hyd)</b>	Std/Opt	Std/Opt	Std/Opt
<b>Main Body Height</b>	36"	43"	43"
<b>3PH Mount</b>	CAT. 2	CAT. 2 & 3	CAT. 2 & 3
<b>Weight (LBS.)</b>	1,161	1,900	1,980
<b>Opt. 1000 RPM</b>	-	Yes	Yes



## Pull Type Performance Series PTO Snowblowers

For snow removal contractors and rural property owners, the Performance Series pull type snowblower is a head-turner that emphasizes safety, comfort and fast, efficient snow clearing. The new Performance Series Pull Type Snowblower puts the operator ahead of the action by inverting the traditional tractor PTO powered snowblower design. With the auger and impeller facing forward, you can now safely clear snow while driving your tractor facing the way it was meant to be driven. With a range of models for 25 to 60 horsepower tractors, Performance Series models feature a standard 5-blade impeller in the raised chamber.



Models	SB54PT-P	SB60PT-P	SB68PT-P	SB72PT-P	SB78PT-P	SB87PT-P	SB97PT-P
<b>HP (Rec.)</b>	25 HP	25 HP	35 HP	35 HP	50 HP	60 HP	60 HP
<b>Cutting Width</b>	54"	60"	68"	72"	78"	87"	97"
<b>Cutting Edge</b>	Bolt On (1/2 x 4)						
<b>Auger Diam.</b>	14"	14"	14"	14"	15"	19"	19"
<b>Fan Diam.</b>	21"	21"	21"	21"	23"	27"	27"
<b>Chute Diam.</b>	8"	8"	10"	10"	10"	12"	12"
<b>Chute Rotation</b>	Must select either Manual (opt.) or Hydraulic (opt.) or Electric (opt.)						
<b>Chute Deflector</b>	Manual Std./Opt. 6" cyl.			Manual Std./Opt. 8" cyl.			
<b>Double Hood Deflector</b>	N/A	N/A	Std.	Std.	Std.	Std.	Std.
<b>Main Body Height</b>	23"	23"	23"	23"	26"	28"	28"
<b>3PH Mount</b>	Cat. 1	Cat. 1	Cat. 1	Cat. 1	Cat. 1 & 2	Cat. 2	Cat. 2
<b>Weight (LBS.)</b>	462	495	671	685	900	1,175	1,260
<b>Tube Size</b>	2 3/8" OD	2 3/8" OD	2 3/8" OD	2 3/8" OD	3 1/2" OD	3 1/2" OD	3 1/2" OD
<b>Flighting Size</b>	1/4 x 2 1/4	1/4 x 2 1/4	1/4 x 2 1/4	1/4 x 2 1/4	1/4 x 2 1/4	5/16 x 2 1/4	5/16 x 2 1/4
<b>Roller Chain Drive</b>	# 50	# 50	# 60 Heavy	# 60 Heavy	# 60 Heavy	# 60 Heavy	# 60 Heavy
<b>Fan Depth</b>	5"	5"	7"	7"	8"	10"	10"
<b>Blades Per Fan</b>	5	5	5	5	5	5	5
<b>Auger Drive Shaft Size</b>	1"	1"	1 1/4"	1 1/4"	1 1/4"	1 1/4"	1 1/4"
<b>Fan Output Shaft Size</b>	1 3/8"	1 3/8"	1 3/8"	1 3/8"	40mm	40mm	40mm

**NEW**



## Features

- Cleans tight to the garage door
- 5 blade impeller
- 7 year limited warranty
- High tensile steel flighting
- Multi-hinged deflector (SB68PT-SB97PT)

## Options



Cutting Edge

Skid Shoe

### OPTIONAL Galvanized Steel Body

Galvanized models use a protective coating to extend the life of your unit with enhanced corrosion resistance. (SB78PTP, SB87PTP & SB97PTP)

### Back Drag

Back drags are manual chain adjustment, and can be upgraded to a hydraulic option for 68" and wider models.

### Tivar Contact Surface

Tivar wear resistant plastic replaces cutting edge and bolts on to skid shoes. Tivar is gentle on brick and stone.

## Pull Type - Standard Series PTO Snowblowers

The pull type Meteor models are built with the same durability as our forward facing models. Rather than having to look over your shoulder to guide the blower around objects, the pull type blower follows the path of your tractor. This action keeps the operator driving away from the blown snow, increasing visibility and creating a better operator experience.



Models	SB54 P/T	SB60 P/T	SB68 P/T	SB72 P/T	SB78 P/T	SB87 P/T	SB97 P/T
<b>HP (Rec.)</b>	25 HP	25 HP	35 HP	35 HP	50 HP	60 HP	60 HP
<b>Cutting Width</b>	54"	60"	68"	72"	78"	87"	97"
<b>Cutting Edge</b>	Bolt On (1/2" x 4")						
<b>Auger Diam.</b>	14"	14"	14"	14"	15"	19"	19"
<b>Fan Diam.</b>	18"	18"	21"	21"	23"	27"	27"
<b>Chute Diam.</b>	8"	8"	10"	10"	10"	12"	12"
<b>Double Hood Deflector</b>	N/A	N/A	Std.	Std.	Std.	Std.	Std.
<b>Chute Rotation</b>	Must select either Manual (opt.) or Hydraulic (opt.) or Electric (opt.)						
<b>Chute Deflector</b>	Manual Standard/ Hydraulic Option						
<b>Main Body Height</b>	25"	25"	25"	25"	28"	32-1/2"	32-1/2"
<b>3PH Mount</b>	CAT. 1	CAT. 1	CAT. 1	CAT. 1	CAT. 1 & 2	CAT. 2	CAT. 2
<b>Weight (LBS.)</b>	462	495	671	685	900	1,175	1,225

## Self-Powered Snow Thrower

For tractors and compact skid loaders without hydraulic remotes, MK Martin offers our self powered snow thrower. While being easy to attach with no drive lines or hoses to worry about, the engine belt drives the shaft which transfers power to the rotor by a roller chain.



Model	S1054E	S1060E
Cutting Width	47"	53"
Motor Type	Vanguard 14HP	Vanguard 14HP
Electric Start	12 Volt	12 Volt
Clutch	Electric (start/stop blower)	
Rotor	16" @ 750 RPM	
Hood Rotator	Electric	Electric
Hood Deflector	Manual	Manual
Cutting Edge	Bolt on 1/4" x 3-1/2"	
Overall Width	54"	60"
Overall Depth	36"	36"
Main Body Height	22.75"	22.75"
Weight	470 lbs.	545 lb.

### Wired Remote

The wired controller allows for remote engine start and shutdown. Oversized buttons allows operators to make quick and accurate adjustment of the chute rotation.



## Bobcat/Steiner/Ventrac Snowblowers

- Designed to fit Bobcat, Ventrac and Steiner articulating tractors
- Hydraulic shoot rotation for smooth blowing
- Ideal for rural driveways and smaller commercial yards
- Compatible with:



Models	SBVEN48	SBVEN54
Cutting width	48"	54"
Cutting Edge	3/8 x 1"	
Auger Diam.	14"	
Fan Diam.	21"	
Chute Diam.	8"	
Chute Rotation	Hyd.	
Chute Deflector	Manual	
Body Height	25"	
Drive	Belt drive	
Mount	Steiner/Ventrac	
Weight (LBS.)	475	488



# Snowblower Options

## Hydraulic Deflector

Hydraulic chute deflector includes the cylinder and the hoses.

Part #	Applicable Models
SB68HD	Fits 54-72
SB78HD	Fits 78-120



## Chute Rotator

Meteor Snow Blower chute rotators come in manual (crank), hydraulic (orbital motor), and electric.



## Multi-Hinged Deflector

Meteor's Multi-Hinged Deflector provides you with finer control over where your snow is blown. Cylinder not included.

Part #	Applicable Models
SB78MHD	Fits 78
SB87MHD	Fits 87-87D-97
SB108MHD	Fits 97D-120D



### Manual

Part #	Description
SB48MR	Fits 48" model
SB60MR	Fits 54" and 60" models
SB68MR	Fits 68" and 72" models
SB78MR	Fits 78" models
SB87MR	Fits 87s, 97s, 87D models
SB60PTMR	Fits 60" Pull Type
SB68PTMR	Fits 68" and 72" Pull Type
SB78PTMR	Fits 78" Pull Type
SB87PTMR	Fits 87" Pull Type
SB97PTMR	Fits 97" Pull Type

### Hydraulic

Part #
SBHR13



### Electric

Part #
SBER13

## Wing Kits

- Fits SB54, SB60, SB68, and SB72
- 18" tall. Made with 10 gauge steel
- Increases path 2" per side

Part #
55399



## Truck Loading Chute

- Provides up to 40" of additional Height
- Hydraulic Rotation
- Hydraulic Multi-Hinged Deflector

Part #	Applicable Models
SB87TLC	87S, 97S, & 87D
SB108TLC	97D & 108D
SB120TLC	120D





## Loader Mount Snowblowers & Power Packs

Note: Different mounting options available, please contact MK Martin to confirm availability.

Ideal for front end loaders, this package includes a hydraulic powered snowblower and a self contained PTO driven power pack. The power pack holds up to 30 gallons and runs 2500 PSI at 30 gallons per minute. Minimum horse power requirement is 40.

### Power Pack Specifications

Models	SBLMPP-30	SBLMPPCS-30
<b>Recommended HP</b>	40-60HP	40-60HP
<b>Capacity (gallons)</b>	30	30
<b>Flow Rate (PSI)</b>	30 GPM/2500 PSI	30 GPM/2500 PSI
<b>Mount</b>	3PH	3PH
<b>Weight</b>	535 LBS.	575 LBS.
<b>Height</b>	48"	48"
<b>Width</b>	39"	39"
<b>Depth</b>	30"	32"
<b>Max Operating Temp. (°C)</b>	2° C	30° C
<b>Max Operating Time (hours)</b>	2 Hour Duty Cycle	Full Duty Cycle
<b>Cooling System Included</b>	No	Yes

Models	SSB66	SSB76	SSB86
<b>Recommended HP</b>	40-60HP	40-60HP	40-60HP
<b>Max. Operating Weight</b>	8,000 LBS.	8,000 LBS.	8,000 LBS.
<b>Cutting Width</b>	66"	76"	86"
<b>Cutting Edge (Bolt-On)</b>	1/2" x 4"	1/2" x 4"	1/2" x 4"
<b>Skid Shoes</b>	3/8" x 1-1/2"	3/8" x 1-1/2"	3/8" x 1-1/2"
<b>Auger Tube</b>	3-1/2" OD	3-1/2" OD	3-1/2" OD
<b>Auger Flighting</b>	5/16 x 2-1/4	5/16 x 2-1/4	5/16 x 2-1/4
<b>Auger Diameter</b>	19"	19"	19"
<b>Hitch Plate</b>	Quick-tach	Quick-tach	Quick-tach
<b>Chute Rotation</b>	Hydraulic	Hydraulic	Hydraulic
<b>Chute Diameter</b>	10"	10"	10"
<b>Main Body Height</b>	27.5"	27.5"	27.5"
<b>Chute Deflector</b>	Hydraulic	Hydraulic	Hydraulic
<b>Fan Diameter</b>	24"	24"	26"
<b>Fan Depth</b>	8"	8"	8"
<b>Auger Drive</b>	Hydraulic	Hydraulic	Hydraulic
<b>Fan Drive</b>	Hydraulic	Hydraulic	Hydraulic
<b>Weight (LBS.)*</b>	928	970	1,000





## Skidsteer Snowblowers

The hydraulic powered Meteor Snow Blower provides year round benefits to skid loader owners with universal quick attach couplers. For optimal performance, hydraulic motors need to be matched to the minimum GPM rating of the equipment.



### Features

- 5 blade impeller
- Direct fan drive mounted
- Pivoting hitch plate
- Hitch plate height adjustable
- Solid side plate construction for added strength and rigidity
- Offset chute for better operator vision
- Hydraulic line check valve allow overrun and prevents reverse rotation
- Solenoid valve feature allows for use of hydraulic rotator motor and hydraulic deflector

### Optional Wiring Kits

Optional Wiring Kits	Description
<b>SSBEWK 7-Bobcat</b>	7 Pin Wire Kit
<b>SSBEK 8Cat</b>	8 pin wire kit
<b>SSBEK 8 Terrex</b>	8 Pin Wire Kit
<b>SSBEK 14Gehl/Case/NH/JCB/Volvo</b>	14 Pin Wire Kit
<b>SSBEK 14JD</b>	14 Pin Wire Kit
<b>SSBEWK14 Kubota/Wacker Neuson</b>	14 Pin Wire Kit

*\*Wacker Neuson standard & high flow*

### Hydraulic Deflector Kit

<b>SSB75HD</b>	Optional Hydraulic Deflector Kit
----------------	----------------------------------

Models	SSB62	SSB66	SSB76	SSB86	SSB96
<b>Cutting Edge (Bolt-On)</b>	1/2" x 4"	1/2" x 4"	1/2" x 4"	1/2" x 4"	1/2" x 4"
<b>Cutting Width</b>	62"	66"	76"	86"	96"
<b>Auger Tube</b>	3 1/2" Round				
<b>Auger Flighting</b>	5/16 x 2 1/4				
<b>Auger Diam.</b>	19"				
<b>GPM (min)</b>	14	14	14	23	33
<b>Mounting</b>	Universal Skidsteer Attach				
<b>Chute Rotation</b>	Hydraulic				
<b>Chute Diam.</b>	10"				
<b>Main Body Height</b>	27-1/2"				
<b>Chute Deflector</b>	Manual Std/Hydraulic Opt				
<b>Fan Diam.</b>	24"	24"	24"	26"	26"
<b>Fan Shaft</b>	2" Diam.				
<b>Weight (LBS.)</b>	910	928	970	1000	1,085
<b>Hydraulic Flow Packages</b>	SSB62HYD-A	SSB66HYD-A	SSB76HYD-A	SSB86HYD-C	SSB96HYD-D
	SSB62HYD-B	SSB66HYD-B	SSB76HYD-B	SSB86HYD-C+	
	SSB62HYD-B+	SSB66HYD-B+	SSB76HYD-B+	SSB86HYD-D	
		SSB66HYD-C	SSB76HYD-C		
			SSB76HYD-C+		
			SSB76HYD-D		

Flow Rates	Code	Flow Rates	Code
<b>14-17 GPM</b>	A	<b>23-26 GPM</b>	C
<b>18-20 GPM</b>	B	<b>27-33 GPM</b>	C+
<b>20-22 GPM</b>	B+	<b>33-40 GPM</b>	D

Code "D" high flow package is recommended on the SSB96.

**CONQUER  
SNOW  
LIKE A  
PRO**



## Commercial Snowblowers

The MK Martin 4000 series commercial snowblower is designed for municipalities and contractors. Designed for tractors between 150 and 250 horsepower, and with a clearing path of up to 120 inches, the MK Martin 4000 Series snowblower moves more snow with every pass - easily clearing deep drifts and hard-packed piles.



### OPTIONS



**Rotating Fan Housing with Side Discharge**



**Truck Loading Chute**

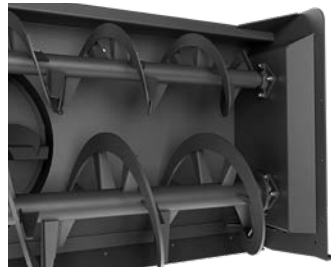


**Bank Cutters**

## FEATURES



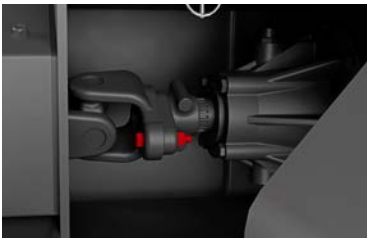
**6 Blade Fan**



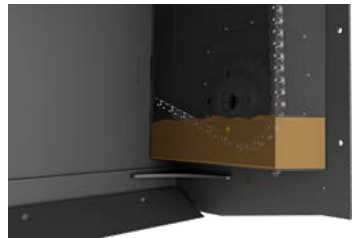
**Twin Auger Chain Drive**



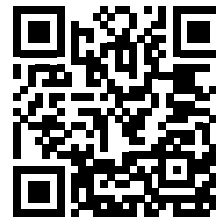
**Hydraulic Chute & Multi-Hinge Deflector**



**Shear Bolt Protection**



**Oil Chain Bath**



**SCAN QR CODE** TO SEE THE COMMERCIAL SNOWBLOWER IN **ACTION**

Models	SBR4097	SBR4108	SBR4120
HP (Rec.)	150-250	150-250	150-250
Cutting Width	97"	108"	120"
Main Body Height	47"	47"	47"
Mount	CAT. 2 & 3	CAT. 2 & 3	CAT. 2 & 3
Impeller (Fan)	36" - 3/8" HD 450 Steel		
Impeller Depth	12"	12"	12"
Impeller Blades	6	6	6
Impeller Output Shaft	2-1/2"	2-1/2"	2-1/2"
Rotating Housing	N/A	N/A	N/A
PTO Drive (RPM)	1,000	1,000	1,000
Stages	2	2	2
Rotor	Ribbon Flighting (Flight Notching Available)		
Rotor (Tube)	4-1/2" OD Heavy Wall		
Rotor (Flighting)	1/2" x 3" (Bottom) 5/16" x 2-1/4" (Top)		
Rotor (Diameter)	23" (Bottom) 15" (Top)		
Rotor (Drive Shaft)	1-3/4"	1-3/4"	1-3/4"
Roller Chain	#100	#100	#100
Cutting Edge	3/4" x 6" Bolt on Cutting Edge		
End Plates	3/8" HD 450 Steel x 48" High		
Chute Diameter	13"	13"	13"
Chute Rotator	Hydraulic	Hydraulic	Hydraulic
Deflector Stages	2	2	2
Chute Deflector	Hydraulic	Hydraulic	Hydraulic
Weight (LBS.)	3,230	3,350	3,485

RH Models*	SBR4097RH	SBR4108RH	SBR4120RH
Rotating Housing	Standard	Standard	Standard
Weight (lbs)	3,490	3,610	3,745

\* RH models have the same specs as the corresponding models on the left, however they include a rotating fan housing.



**7** YEAR  
WARRANTY

# LIVING COUNTRY

EQUIPMENT FOR RURAL PROPERTY CARE



3950 Steffler Rd., Elmira Ontario, N3B 2Z3

Toll Free: 855-664-2752

Tel: 519-664-2752

Email: [sales@mkmartin.ca](mailto:sales@mkmartin.ca)

[www.mkmartin.ca](http://www.mkmartin.ca)

**Authorized Dealer**

