



MK MARTIN
ENTERPRISE Inc.



50
1969 - 2019



Two Year Limited Consumer Warranty
Five Year Limited Consumer Warranty on Gearboxes
90 Day Limited Commercial Warranty including Gearboxes

For all warranty information, please contact MK Martin by phone at 1.855.664.2752 or by email at sales@mkmartin.ca

Contents

Single Auger 4

Pull Type 5

Dual Auger 6

Truck Loading Chute 7

Features & Options 8

Loader Mount 10

Skidsteer 11

SnowThrowers 12

Pull Type SnowThrowers 15

Commercial SnowBlowers 16





Single Auger

Single auger snow blowers from MK Martin easily cut through winters icy grasp. High tensile steel flighting feeds snow to the 5 blade fan. It's tight tolerance to the housing sucks in the snow blowing it out of the chute with as little as 12 HP.



For convenience, snowblowers with a main body height of 25" or less come with a standard manual chute rotator. On larger blowers where operators may not be able to safely reach a manual rotator as standard equipment, all rotators are optional.

Specifications

Models	SB48	SB54	SB60	SB68	SB72	SB78	SB87	SB97
HP (Rec.)	12 HP	15 HP	20 HP	30 HP	35 HP	50 HP	60 HP	75 HP
Cutting Width	48"	54"	60"	68"	72"	78"	87"	97"
Cutting Edge	1/4 x 1-1/2	3/8 x 1	3/8 x 1	3/8 x 1	3/8 x 1	1/2 x 1-1/2	1/2 x 2	1/2 x 2
Auger Diam.	12"	14"	14"	14"	14"	15"	19"	19"
Fan Diam.	19"	21"	21"	21"	21"	23"	27"	27"
Chute Diam.	7"	8"	8"	10"	10"	10"	12"	12"
Chute Rotation (Man/Hyd)	Std/Opt	Std/Opt	Std/Opt	Opt/Opt	Opt/Opt	Opt/Opt	Opt/Opt	Opt/Opt
Chute Deflector (Man/Hyd)	Std/NA	Std/Opt	Std/Opt	Std/Opt	Std/Opt	Std/Opt	Std/Opt	Std/Opt
Main Body Height	22.5"	25"	25"	29"	29"	29"	36"	36"
3PH Mount	CAT. 1	CAT. 1	CAT. 1	CAT. 1	CAT. 1	CAT. 1 & 2	CAT. 2	CAT. 2
Weight (LBS.)	266	366	396	506	540	748	1034	1106

Pull Type

The pull type Meteor models are built with the same durability as our forward facing models. Rather than having to look over your shoulder to guide the blower around objects the pull type blower follows the path of your tractor. This action keeps the operator driving away from the blown snow increasing visibility and creating a better operator experience.



Pictured: Shown with options



Back Drag (Optional)

Available in Manual or Hydraulic



Back Drag

Tivar Contact Surface (Optional)

Protects surfaces against cosmetic damage from steel skid shoes and cutting edges.



Skid Shoe

Specifications

Models	SB60PT	SB68 P/T	SB78 P/T	SB87 P/T	SB97 P/T
HP (Rec.)	25 HP	35 HP	50 HP	60 HP	60 HP
Cutting Width	60"	68"	78"	87"	97"
Cutting Edge	Bolt On (1/2 x 4)	Bolt On (1/2 x 4)	Bolt On (1/2 x 4)	Bolt On (1/2 x 4)	Bolt On (1/2 x 4)
Auger Diam.	14"	14"	15"	19"	19"
Fan Diam.	18"	21"	23"	27"	27"
Chute Diam.	8"	10"	10"	12"	12"
Double Hood Deflector	N/A	Std.	Std.	Std.	Std.
Chute Rotation (Man/Hyd)	Manual (std.) or Hydraulic (opt.)	Manual (opt.) or Hydraulic (opt.)	Manual (opt.) or Hydraulic (opt.)	Manual (opt.) or Hydraulic (opt.)	Manual (opt.) or Hydraulic (opt.)
Chute Deflector (Man/Hyd)	Std./Opt. 6" cyl.	Std./Opt. 6" cyl.	Std./Opt. 8" cyl.	Std./Opt. 8" cyl.	Std./Opt. 8" cyl.
Main Body Height	25"	25"	28"	32-1/2"	32-1/2"
3PH Mount	Cat. 1	CAT. 1	CAT. 1 & 2	CAT. 2	CAT. 2
Weight (LBS.)	495	671	900	1,175	1,225



Dual Auger

Dual auger snow blowers from MK Martin work well in both acreage and commercial applications. Boasting up to a 120" cutting path, these snow blowers accommodate an additional auger to help chew down the most stubborn of snow banks.

Larger blowers means larger tractors. To accommodate the PTO needs of larger tractors dual auger blowers are compatible with the optional 1000 RPM PTO kit providing the perfect connection.



All dual auger model snow blowers feature skid shoes to help maintain consistent placement of the cutting edge and prevent surface damage.

Specifications

Models	SB87D	SB97D	SB108D	SB120D
HP (Rec.)	60 HP	100 HP	125 HP	200 HP
Cutting Width	87"	97"	108"	120"
Cutting Edge	1/2 x 2	1/2 X 6*	1/2 x 6*	1/2 x 6*
Auger Diam.	15" (x2)	19" (x1) 15" (x1)	19" (x1) 15" (x1)	23" (x1) 15" (x1)
Fan Diam.	27"	32"	32"	36"
Chute Diam.	12"	13"	13"	13"
Chute Rotation (Man/Hyd)	Opt/Opt	NA/Std	NA/Std	NA/Std
Chute Deflector (Man/Hyd)	Std/Opt	Std/Opt	Std/Opt	Std/Opt
Main Body Height	36"	43"	43"	47"
3PH Mount	CAT. 2	CAT. 2 & 3	CAT. 2 & 3	CAT. 2 & 3
Weight (LBS.)	1161	1900	1980	3010
Opt. 1000 RPM	-	Yes	Yes	Yes



Truck Loading Chute

During tough winters when the snow starts to pile up the MK Martin truck loading chute is the answer. This extendible chute allows operators more flexibility and control for where snow is placed. The extendible chute and the multi-hinged deflector makes placing snow higher on the pile or into an awaiting truck easy and virtually spill free.

The truck loading chute is available on 97D - 120D dual auger models. The chute features hydraulic rotation, hydraulic height extension, and a hydraulic deflector. These three independent controls work together to ensure that snow is placed with extreme precision.

	Deflector Height with Chute Lowered		Deflector Height with Chute Extended	
	Lowered	Extended	Lowered	Extended
SB97D	106"	146"	136"	176"
SB108D	106"	146"	136"	176"
SB120D	110"	150"	140"	180"





Features



3PH / Quick Attach

All single auger PTO driven models are built for Category 1 or Category 2 type 3PH. Dual auger PTO driven models are built for Category 2 or Category 3 type 3PH. All models are Quick Attach compatible.



High Tensile Steel Ribbon Flighting

To deliver even the heaviest wet snow to the awaiting fan, Meteor Snow Blowers use machine formed hand welded augers made with high tensile steel ribbon flighting to provide strength and durability for years to come.



Five Blade Fan

All Meteor Snow Blowers now feature a standard 5 blade fan. The five blades not only evacuate high volumes of snow quickly, but also feature tighter tolerance to the housing increasing velocity of the snow exiting the chute.



Gear Box

The time-proven Comer gearbox transfers PTO power from the tractor into the driveline of the Meteor. Ensuring consistent power input to the auger and fan assemblies.



Manual Deflector

All Meteor Snow Blowers come with a manual pin style deflector allowing a true set it and forget approach to blowing snow.



Skid Shoes

Meteor Snow Blowers come equipped with adjustable skid shoes extending the life of the cutting edge and helping to protect surfaces from damage commonly associated with snow removal.

Options



Manual Rotator

Manual rotators are standard on SB48, SB54, and SB60 single auger models and can be optionally outfitted on most models where operators can safely reach the adjustment handle.



Hydraulic Rotator

The optional hydraulic rotator is the ideal upgrade for tractors with cabs or for contractors/property managers needing to make frequent adjustments.

Hydraulic rotators are standard equipment on SB97D, SB108D, and SB120D models.



Electric Rotator

When hydraulic power isn't available the 12V electric rotator provides a hands off approach to chute rotation.

Contact MK Martin for compatibility and availability.



Hydraulic Deflector

Hydraulic deflectors control the distance and arc of the thrown snow and are an available option on all models.



Multi-Hinged Deflector

The optional multi-hinged deflector is available for most models and allows increased precision in where snow is blown allowing snow to be placed closer to the blower or into a truck to be hauled away.



1000 RPM PTO Kit

Available for the SB97D, SB108D, and the SB120D models, this kit allows the PTO of larger tractors to run at 1000 RPM without damaging the standard 540 RPM gearbox. The 1000 RPM Kit also raises the input shaft to allow the PTO shaft to run at a lesser angle on larger tractors increasing the efficiency and life of the driveline components.

Note: features rotation reversal for front mount applications if required.



Loader Mount

Note: Different mounting options available, please contact MK Martin to confirm availability.

The loader mount Meteor is the ideal snow blower package for owners of small tractors equipped with loader arms. The package includes a self contained PTO driven power pack to drive the hydraulics required by the snow blower.

The power pack holds up to 30 gallons and runs 2500 PSI at 30 gallons per minute on as little as 40 horse power. A second model is available with a cooling fan, increasing the max operating temperature giving you more time to clear snow.

Well out of reach, loader mount Meteor packages feature hydraulic chute rotators and hydraulic deflectors easily putting snow in its place.



Power Pack shown with Cooling System (SBLMPPCS-30)

Loader Mount Specifications

Models	SBLM66	SBLM76	SBLM86
Recommended HP	40-60HP	40-60HP	40-60HP
Max. Operating Weight	8,000 LBS.	8,000 LBS.	8,000 LBS.
Cutting Width	66"	76"	86"
Cutting Edge	3/8" x 3"	3/8" x 3"	3/8" x 3"
Skid Shoes	3/8" x 1-1/2"	3/8" x 1-1/2"	3/8" x 1-1/2"
Auger Tube	3-1/2" OD	3-1/2" OD	3-1/2" OD
Auger Flighting	5/16 x 2-1/4	5/16 x 2-1/4	5/16 x 2-1/4
Auger Diameter	19"	19"	19"
Roller Chain	#60	#60	#60
Hitch Plate	Quick-tach	Quick-tach	Quick-tach
Chute Rotation	Hydraulic	Hydraulic	Hydraulic
Chute Diameter	12"	12"	12"
Main Body Height	31"	31"	31"
Chute Deflector	Hydraulic	Hydraulic	Hydraulic
Fan Diameter	26"	26"	26"
Fan Depth	8"	8"	8"
Auger Drive	Hydraulic	Hydraulic	Hydraulic
Fan Drive	Hydraulic	Hydraulic	Hydraulic
Weight (LBS.) *	970	1,015	1,065

* Weight includes snowblower only.

Power Pack Specifications

Models	SBLMPP-30	SBLMPPCS-30
Recommended HP	40-60HP	40-60HP
Capacity (gallons)	30	30
Flow Rate (PSI)	30 gpm/2500psi	30gpm/2500psi
Mount	3PH	3PH
Weight	535 LBS.	575 LBS.
Height	48"	48"
Width	39"	39"
Depth	30"	32"
Max Operating Temp. (°C)	2° C	30° C
Max Operating Time (hours)	2 Hour Duty Cycle	Full Duty Cycle
Cooling System Included	No	Yes



Skidsteer

The hydraulic powered Meteor Snow Blower provides year round benefits to skid loader owners with universal quick attach couplers.

For optimal performance hydraulic motors need to matched to the equipments minimum GPM rating.

- Hydraulic line check valve prevents reverse rotation and allows the motor to overrun after valve is shut off
- Direct fan drive mounted with 2" bearings
- Heavy duty fan has 5 impeller blades
- Solenoid valve feature allows for use of hydraulic rotator motor and hydraulic deflector cylinder
- Various plug options to match your skidsteer so you can use the controls on the skidsteer

Specifications

Models	SSB62	SSB66	SSB76	SSB86	SSB96
Cutting Edge (Bolt-On)	1/2 x 4	1/2 x 4	1/2 x 4	1/2 x 4	1/2 x 4
Cutting Width	62"	66"	76"	86"	96"
Auger					
Tube	3 1/2" Round				
Flighting	5/16 x 2 1/4				
Auger Diam.	19"				
GPM (min)	14	14	14	23	33
Mounting	Universal Skidsteer Attach				
Chute Rotation	Hydraulic				
Chute Diam.	11"				
Main Body Height	31"				
Chute Deflector (Man/Hyd)	Std/Opt				
Fan Diam.	26"				
Fan Shaft	2" Diam.				
Weight (LBS.)	900	925	950	975	1,025

SnowThrowers



1044H SnowThrower



2054H SnowThrower

1000 Series SnowThrower

Model	1048	1054FM	1048H
Widths	48"	54"	48"
Stages	1	1	1
PTO Drive	540	2500	N/A
HP	15-30	15-30	15-30
Mount	CAT. I	Skidsteer	USSP
Rotor	16"	16"	16"
Torsion Style Chain Tensioner	Std.	Std.	Std.
Chute Rotator / Deflector	Man. / Man.	Hyd. / Hyd.	Hyd. / Man.
Cutting Edge	Heat Treated Bolt-On	Heat Treated Bolt-On	Heat Treated Bolt-On
Skid Shoes	Replaceable	Replaceable	Replaceable

2000 Series SnowThrower

Model	2048	2048H	2054	2054H
Widths	48"	48"	54"	54"
Stages	1	1	1	1
PTO Drive	540	N/A	540	N/A
HP	25-55	25-55	25-55	25-55
Oil Flow (GPM)	N/A	20-35	N/A	20-35
Mount	CAT. I	USSP	CAT. I	USSP
Rotor	24"	24"	24"	24"
Torsion Style Chain Tensioner	Std.	N/A	Std.	N/A
Chute Rotator / Deflector	Hyd. / Hyd.	Hyd. / Hyd.	Hyd. / Hyd.	Hyd. / Hyd.
Cutting Edge	Bolt-On AR400	Bolt-On AR400	Bolt-On AR400	Bolt-On AR400

Model	2060	2060H	2072	2072H	2084	2084H
Widths	60"	60"	72"	72"	84"	84"
Stages	1	1	1	1	1	1
PTO Drive	540	N/A	540	N/A	540	N/A
HP	25-55	25-55	25-55	25-55	25-55	25-55
Oil Flow (GPM)	N/A	20-35	N/A	20-35	N/A	20-35
Mount	CAT. I	USSP	CAT. I	USSP	CAT. I	USSP
Rotor	24"	24"	24"	24"	24"	24"
Torsion Style Chain Tensioner	Std.	N/A	Std.	N/A	Std.	N/A
Chute Rotator / Deflector	Hyd. / Hyd.	Hyd. / Hyd.	Hyd. / Hyd.	Hyd. / Hyd.	Hyd. / Hyd.	Hyd. / Hyd.
Cutting Edge	Bolt-On AR400	Bolt-On AR400	Bolt-On AR400	Bolt-On AR400	Bolt-On AR400	Bolt-On AR400

3000 Series SnowThrower

Model	3084	3096	3108
Widths	84"	96"	108"
Stages	1	1	1
PTO Drive	540	540	540
HP	40-100	40-100	40-100
Mount	Cat. II	Cat. II	Cat. II
Rotor	30"	30"	30"
Torsion Style Chain Tensioner	Std.	Std.	Std.
Chute Rotator / Deflector	Hyd. / Hyd.	Hyd. / Hyd.	Hyd. / Hyd.
Cutting Edge	Bolt-On AR400	Bolt-On AR400	Bolt-On AR400

Options



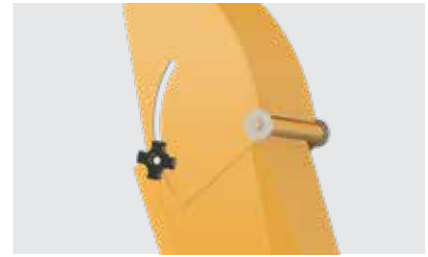
Carbide Skid Shoes and Cutting Edge

The carbide skid shoes and cutting edge are available on all models, giving you longer life for both the skid shoes and cutting edge.



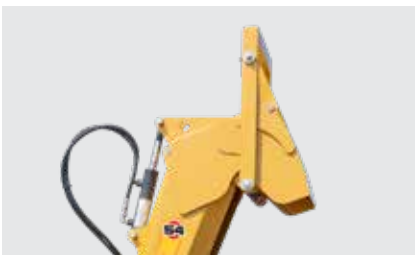
Manual Chute Rotator

Ideal for those with an open cab or those without hydraulic hookups, the manual chute allows you to manually rotate the chute to control the direction of the snow as you throw it.



Manual Chute Deflector

The manual chute deflector allows you to change the height of the thrown snow without hydraulic hookups.



Multi-Hinged Deflector

The multi-hinged deflector allows the snow to be dumped closer to the blower, making it ideal for sidewalks and municipal use.



Short Chute

The short chute is less likely to clog during high speed clearing making it the ideal companion for your snow thrower.

Pull-Type SnowThrowers



Pull Type SnowThrower

Model	2087PT	3096PT
Widths	87"	96"
Stages	1	1
PTO Drive	540	540
HP	40-60	40-100
Mount	CAT. I	Cat. II
Rotor	24"	30"
Torsion Style Chain Tensioner	Std.	Std.
Chute Rotator / Deflector	Hyd. / Hyd.	Hyd. / Hyd.
Cutting Edge	Bolt-On AR400	Bolt-On AR400
Floating Rear Scraper Blade	Std.	Std.

SnowBlowers



4000 Series SnowBlower

Model	4108	4120
Widths	108"	120"
Stages	2	2
PTO Drive	1000	1000
HP	80-120	80-120
CAT.	CAT. II	CAT. II
Fan Size	36"	36"
Fan Depth	12"	12"
Fan Blades	6	6
Augers	12" (top) & 20" (bottom) solid flight top auger	
Hydraulic Rotating Fan Housing	N/A	N/A
Hydraulic Chute Rotator	Std.	Std.
Cutting Edge	3/4" x 6" Heat Treated Bolt-On	
Skid Shoes	Adjustable	Adjustable
De-Icing Auger Drive Sprockets with Torsion Chain Tensioners	Std.	Std.

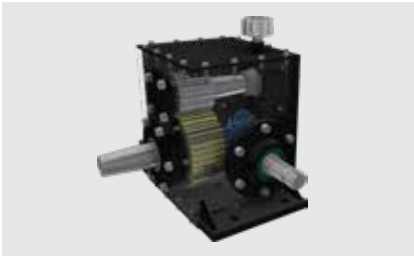
6000 Series SnowBlower

Model	6108	6108RH	6120	6120RH
Widths	108"	108"	120"	120"
Stages	2	2	2	2
PTO Drive	1000	1000	1000	1000
HP	80-300	80-300	80-300	80-300
CAT.	CAT. II	CAT. II	CAT. II	CAT. II
Fan Size	36"	36"	36"	36"
Fan Depth	12"	12"	12"	12"
Fan Blades	6	6	6	6
Augers	12" (top) & 24" (bottom) solid flight top auger			
Hydraulic Rotating Fan Housing	N/A	Opt.	N/A	Opt.
Hydraulic Chute Rotator	Std.	Std.	Std.	Std.
Cutting Edge	3/4" x 6" Heat Treated Bolt-On			
Skid Shoes	Adj.	Adj.	Adj.	Adj.
De-Icing Auger Drive Sprockets with Torsion Chain Tensioners	Std.	Std.	Std.	Std.

8000 Series SnowBlower

Model	8108	8120
Widths	108"	120"
Stages	2	2
PTO Drive	1000	1000
HP	150-300	150-300
CAT.	CAT. II	CAT. II
Fan Size	50"	50"
Fan Depth	12"	12"
Fan Blades	6	6
Augers	14" (middle & top) & 24" (bottom) solid flight top auger	
Auger Chains	100 (middle & top) & 120 (bottom)	
Enclosed Chain Bath	Std.	Std.
Rotating Fan Housing	Opt.	Opt.
Hydraulic Chute Rotator	Std.	Std.
Cutting Edge	3/4" x 6" Heat Treated Bolt-On	
Skid Shoes	Adjustable	Adjustable
De-Icing Auger Drive Sprockets with Torsion Chain Tensioners	Std.	Std.

Features



1000 RPM Gearbox

This custom built gearbox was built to handle the toughest circumstances and deliver 300 continuous horsepower to the augers. The heat treated 3-3/4" wide spur gears transfer power from your tractor to the fan.



Adjustable Skid Shoes

The skidshoe provides incremental adjustment as it wears so both skid shoes wear together.



Hydraulic Chute Rotator

The hydraulic rotator is ideal for tractors with cabs or for contractors/property managers needing to make frequent adjustments.



Self-Deicing Auger Sprockets

To prevent chain jumping from ice buildup, the sprockets feature reliefs which allow the sprockets to self clean as they mesh with the chain.



Rotating Fan Housing

Available only on select models.

The rotating fan housing allows operators to quickly move snow into windrows by discharging the snow to the right or left without passing it through the chute.



Six Blade Fan

All Commercial Meteor SnowBlowers feature a standard 6 blade fan. The six blades not only evacuate high volumes of snow quickly, but also feature tighter tolerance to the housing increasing velocity of the snow exiting the chute.

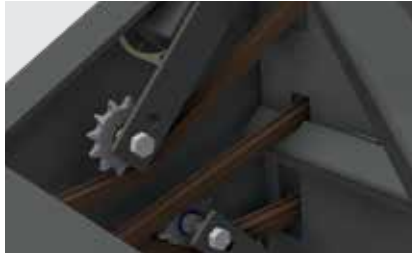
Options



1000 RPM to 540 Gear Reducer

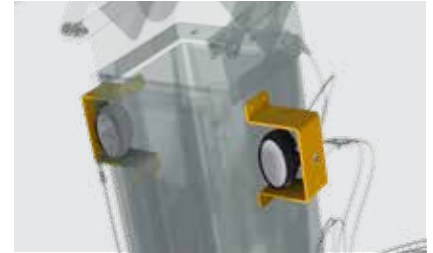
Available only on 4000 models.

The 1000 RPM to 540 gear reducer is designed to reduce the your tractor's PTO speed from 1000 RPM to 540 RPM.



Auger Chain Tension Tensioners

Torsion sprung tensioners ensure that the appropriate amount of pressure remains on the chain to preventing skipping.



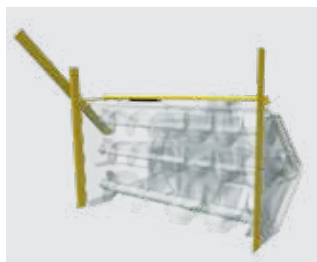
Work Light Kit

Positioned on the side of the chute, these work lights allow you to see better when working in low light conditions.



Telescopic Chute

The telescopic chute is ideal for blowing snow into trucks or tall snow banks in high snow fall areas.



Bank Cutters

Available either in fixed or hydraulic options, these bank cutters reach above the blower's body directing snow down to the augers.



Multi-Hinged Deflector

The multi-hinged deflector allows the snow to be dumped closer to the blower, making it ideal for sidewalks and municipal use.



Carbide Skid Shoes

The carbide skid shoes and cutting edge are available on all models, giving you longer life for both the skid shoes and cutting edge.

TAME YOUR DOMAIN



Authorized Dealer

3950 Steffler Rd., Elmira Ontario, N3B 2Z3

Toll Free: 855-664-2752

Tel.: 519-664-2752

Fax: 519-664-3695

Email: sales@mkmartin.ca

www.mkmartin.ca