



NORDLAND

FLAIL MOWERS & ROTARY CUTTERS

Flail Mowers



FM & FMH Series Flail Mowers

Nordland Flail mowers provide operators with an effective means to mow grass or cut brush up to 1.5 inches in diameter. With a range of sizes, up to 87" working width, and capacity to operate on 30 to 60 horsepower tractors, jobs are completed quickly and efficiently. Features that come as standard equipment, including hydraulic side shift, adjustable rear roller, and adjustable side skids, allow operators to achieve results with greater accuracy and efficiency.

- Cat. I/II standard 3-Point hitch
- Electronically balanced rotors
- PTO Shaft with shear pin protection
- Central gearbox equipped with free wheel clutch (540 RPM – 60 HP)
- Hydraulic side shift
- Adjustable rear roller
- Adjustable side skids
- Powder coated paint finish

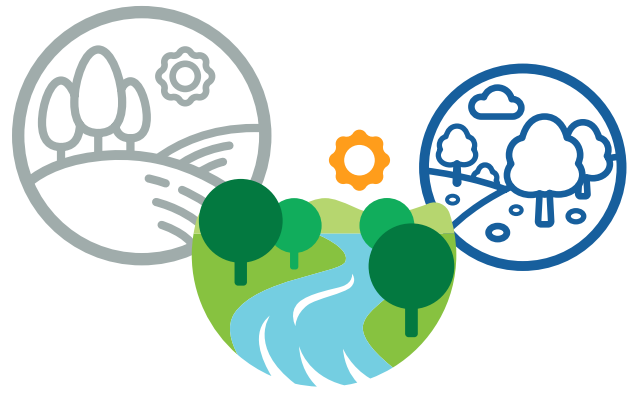
Rotary Cutters



Rotary Cutters

Powerful enough to cope with tall weeds and small bushes, while still able to give a satisfactory fine cut on turf areas, Nordland Rotary Cutters provide a cost-effective yet versatile grass-cutting solution. The 3-Point Quick Hitch provides for faster attachment to the tractor; the floating top link, skid plates, and rear tire keep scalping to a minimum while maintaining efficient operating speeds. All Nordland standard features combine to assist you in completing a quality job quickly and efficiently, though many competitors consider these items optional equipment at an extra charge.

- 3-Point Quick Hitch Compatible
- Floating Top Link
- Front and Rear Chain Guards
- Stump Jumper
- 540 RPM PTO With Slip Clutch
- 3mm Deck Thickness (approx. 11-Gauge)
- Side Skids
- Rear Tire
- Reversible Steel Blades
- 7' model has double tail wheel



Flail Mower Specifications

| Model | Cutting Width | Min - Max Engine HP | Category | # of Knives | Full Right Side Shift | Weight (lbs.) |
|---------|---------------|---------------------|----------|-------------|-----------------------|---------------|
| FM-100 | 39" | 30-60 HP | I/II | 24 | 0" | 660 |
| FMH-130 | 51" | 30-60 HP | I/II | 32 | 12" | 806 |
| FMH-145 | 57" | 30-60 HP | I/II | 36 | 12" | 854 |
| FMH-160 | 63" | 35-60 HP | I/II | 40 | 12" | 907 |
| FMH-175 | 69" | 40-60 HP | I/II | 44 | 12" | 955 |
| FMH-205 | 80" | 45-60 HP | I/II | 52 | 12" | 1,060 |
| FMH-220 | 87" | 50-60 HP | I/II | 56 | 12" | 1,113 |

Rotary Cutter Specifications

| Model | Build | Cutting Width | Transport Width | Min Engine HP | Gearbox Rating | Cat | Weight (lbs) |
|----------|---------------|---------------|-----------------|---------------|----------------|-----|--------------|
| FKSDRC-4 | Standard Duty | 48" | 4'8" | 15 HP | 40 HP | I | 538 |
| FKMDRC-5 | Medium Duty | 60" | 5'8" | 25 HP | 75 HP | I | 617 |
| FKMDRC-6 | Medium Duty | 72" | 6'8" | 35 HP | 75 HP | I | 725 |
| FKHDRC-7 | Heavy Duty | 84" | 7'3" | 45 HP | 75 HP | II | 1,375 |



Distributed by:

Portage, WI | Fargo, ND | Lakeville, MN | Huron, SD



toll free 888.443.3639
email sales@edneyco.com
www.edneyco.com