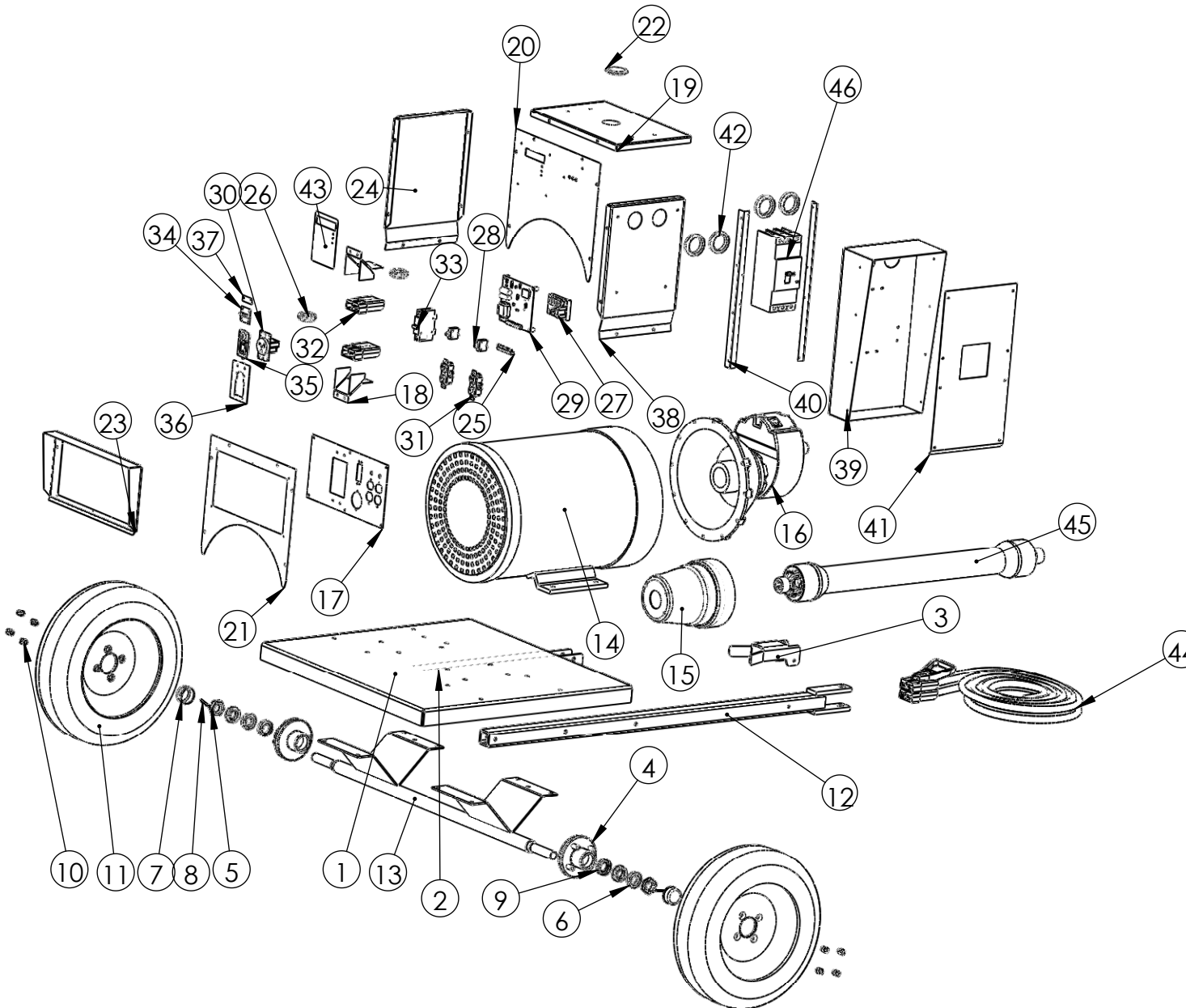


QC65 Generator



ITEM NO.	PART NUMBER	DESCRIPTION	QTY.
1	G2042	105KW Trailer Deck	1
2	G2078	75KW Trailer	1
3	G2009	PTO Sup. 105KW Trailer	1
4	G2034	4 Bolt Hub	2
5	G2020	Spindle Nut	2
6	G2023	Tapered Hub Bearing	4
7	G2022	Dust Cap	2
8	G2019	Spindle Pin	2
9	G2021	Grease Seal	2
10	G2018	Wheel Nut	8
11	G2016	Tire & Rim 21"	2
12	G2010	Tongue-105KW Trailer	1
13	G2035	105KW Trailer Axel	1
14	E2026	Generator QC65	1
15	G2008	105KW PTO Gaurd	1
16	G2063	540 RPM 68 KW COMER	1
17	G2070	QC100 Panel	1
18	G2069	350 AMP Anderson Bracket	2
19	G2066	QC100 Top Panel	1
20	G2065	QC100 Front Panel	1
21	G2064	QC100 Back Panel	1
22	G2060	Plastic Cap	1
23	G2057	QC100 Rain Cover	1
24	G2067	QC100 Side Panel	1
25	E2018	Plug	1
26	E2019	300-5 CT	2
27	E2020	Voltage Regulator	1
28	E2000	20A Switch	2
29	E2017	Display Master 1	1
30	E2001	Welder Receptical	1
31	E2004	Duplex Receptical	2
32	E2022	350 AMP Anderson Connector	2
33	E2005	50 Amp Breaker	1
34	G2012	Mini Stainless Hinge	1
35	G2013	Mini-Lock	1
36	G2015	Hinge Mount	1
37	G2048	Space Plate	1
38	G2074	Side Panel With Hole	1
39	G2073	BB Main Box	1
40	G2071	BB Box Angel	2
41	G2072	BB Cover	1
42	G2090	Rubber Seal Breaker Box	4
43	E2055	Display Master 1 Sticker	1
44	E2024	65 Kw Cord Kit	3
45	G2083	540 RPM 68KW PTO	1
46	E2027	250 A 2 Pole Breaker	1

PROPRIETARY AND CONFIDENTIAL
 THE INFORMATION CONTAINED IN THIS DRAWING IS THE SOLE PROPERTY OF BAUMALIGHT. ANY REPRODUCTION IN PART OR AS A WHOLE WITHOUT THE WRITTEN PERMISSION OF BAUMALIGHT IS PROHIBITED.

Please Specify Serial # When Ordering Parts

BAUMALIGHT

MTB MFG INC.
 4575 Powel Rd. Tel:(519)698-9864
 RR# 1, Wallenstein Fax:(519)698-1087
 ON, N0B 2S0 Email:menno@mtbmfg.ca
 Web:www.mtbfmg.ca