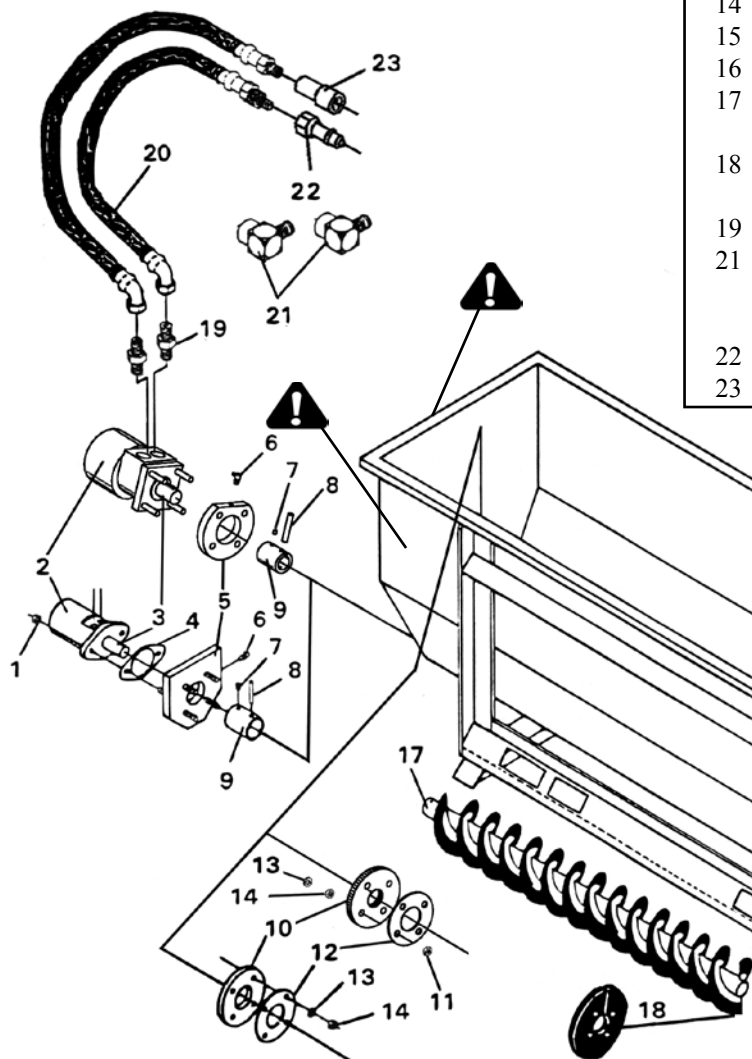


Parts



SHARED PARTS BY ALL MODELS			
REF. PART			
NO.	NO.	DESCRIPTION	QTY.
3	11033	Key	1
6	11036	90° Grease Zerk (1/4"-28)	1
13	11042	Lock Washer (3/8")	4
14	11043	Nut (3/8"-16)	4
15	11044	Splash Shield	1
16	11045	Hair Pin	1
17	11046	Discharge Auger Assembly	1
	11047	Mixing Auger Assembly	1
18	11049	Discharge Replacement Auger Flighting	1
	11050	Mixing Replacement Auger Flighting	1
19	11052	Straight Adapter 8MP-8MJ	2
21	11055	Elbow 8MP-8FP (for connecting to skid-steer auxiliary hydraulics, if necessary)	2
22	11083	Male Quick Coupler	1
23	11184	Female Quick Coupler	1

! = Safety Sign Location

STANDARD HYDRAULIC MOTOR MODELS 3110, 3112, AND 3120			
REF. PART			
NO.	NO.	DESCRIPTION	QTY.
2	11059	Standard Hydraulic Motor	1
5	11058	Motor Mounting Plate	1
	11061	Hub and Seal Kit (Includes REF. NOS. 7-11)	1
7		Set Screw (5/16" x 19/64")	1
8		Roll Pin (3/8" x 2")	1
9		Collar	1
10		Motor Seal	1
11		Nut-Stover (3/8"-16)	4
12	11060	Seal Retainer	1
20	11053	Standard Motor Hose Assembly (1/2" x 84")	2

HEAVY SERVICE HYDRAULIC MOTOR MODELS 2210, 2220, AND 2312			
REF. PART			
NO.	NO.	DESCRIPTION	QTY.
1	11030	Nut (1/2"-13)	2
2	11032	Heavy Service Hydraulic Motor	1
4	11034	Motor Spacer	2
5	11035	Motor Mounting Plate	1
	11022	Hub and Seal Kit (Includes REF. NOS. 7-10)	1
7		Set Screw (5/16" x 19/64")	1
8		Roll Pin (3/8" x 2")	1
9		Collar	1
10		Motor Seal	2
12	11041	Seal Retainer	1
20	11054	Heavy Service Motor Hose Assembly (1/2" x 84")	2